

MolotusTM

上海沐莲国际贸易有限公司

Shanghai Molotus Chemical CO.,LTD.

Tel: 0086 21 61203239 Fax: 0086 21 61612025 Add: Room 402, No.553, Maotai Road, Changning District, Shanghai
E-mail: Florence.huang@molotuschem.com Donna.wen@molotuschem.com Melanie.wu@molotuschem.com

The logo for Molotus company, please check with the field as the theme of creative trademark Molotus company.

© 2016-2020 MOLOTUS BIOTECH CO.LTD

Get more Molotus information and other Molotus products and services, Please contact your local representative or company.

Go to www.molotuschem.com



www.molotuschem.com

SAFE AND RELIABLE PLANT PROTECTION SCHEME / **Molotus**

MolotusTM

Who We Are

We will provide you with safe and reliable plant protection scheme.

Molotus is devoted to pesticide production, pesticide research and development, relevant products and services, and in the same time provide global agricultural plant protection program, helping sustainable development of agriculture.

Molotus distributes products all over the world like Africa, South East Asia, the Middle East, South America, Eastern Europe etc. The feedback from the market is so good that we obtain the customers' praise.

Molotus factory lab is determined to be the most professional and efficient pesticide test center in China. Equipped with advanced equipment such as HPLC, GC, MS, IR, UV, laser particle size analyzer, screening instrument, moisture tester etc, the Quality Control Center can accurately identify products active ingredient, do active ingredient content analysis/impurities analysis/particle size analysis/powder fineness analysis/moisture analysis/emulsification analysis/suspension analysis etc. Meanwhile, the adoption of Chinese national standard or CIPAC method ensures that all products comply with pesticide industry or the enterprise standards. With these advanced equipments and strict testing method, we provide our customers with high quality pesticide products as well as excellent testing services.

Molotus factory lab consist of formulation development and quality inspection center. To develop new pesticides, new products developing center is estimated to be launched in the next 2 years. At present, we have cooperated with Shanghai pesticide research institute, SGS etc, and committed to be top laboratory for pesticide inspection and development. Besides it plays an important role in quality control system. We fetch samples from each batch of products in factory and deliver to lab for test. If qualified, we make shipping. If not, we track the production lines and find the source of the problem until quality is the best. We keep the samples of each batch in lab for two years. In case any problem, we can find solution from the samples. Molotus strictly follows every step of production, from raw material to package, we care about the product's all details.

To support all clients, Molotus carries out the "Mangrove Plan". According to different customers and marketing areas, we launch MMDP (Molotus Mangrove Distributor Plan), MMSP (Molotus Mangrove Seller Plan), MMFP (Molotus Mangrove Farmer Plan).

Molotus is family of all staff. We get together for a better future.

FACTORY

Advanced production equipment and high-quality products.



Factory production is the key part of quality control, so Molotus invest much money in the machines and employees to satisfy our client's quality demand. Powder Production Equipment has the most advanced, green, intelligent and totally enclosed type of Jet Milling and Mixing System, formed the Integration production line from the raw material to the finished product. Powder filling line also use the totally enclosed intelligent automatic control and transporting powder by vacuum system to the maximum ensure quality and eliminate dust. Liquid packaging production line is the most advanced intelligent automatic production line in China, and delivered a huge fall in unit labor costs when high-quality products production.

Global Certificate

Molotus can support registration documents, including GLP report, five batch test report, six toxicology experiment report, and the other documents like ICAMA etc.

Certifications



Molotus develops from design to management strictly in accordance with the GLP standard.



ISO9001



GLP



CMA

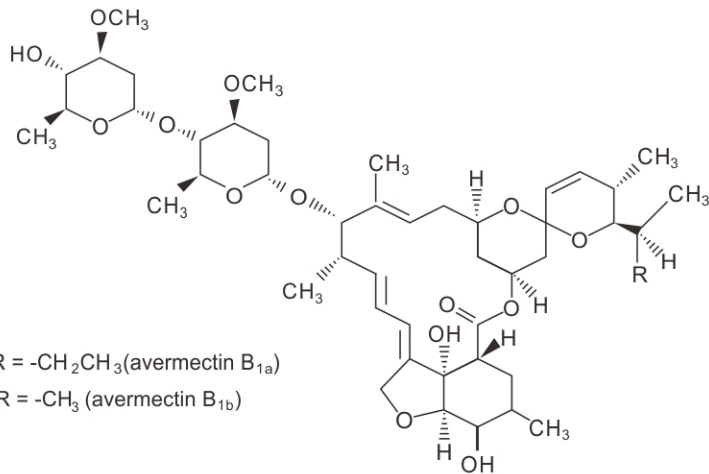


CNAS

Focus Product

Abamectin

Structure formula:



- (i) R = -CH₂CH₃(avermectin B_{1a})
(ii) R = -CH₃ (avermectin B_{1b})

Application:

Control of motile stages of mites, leaf miners, suckers, Colorado beetles, etc. on ornamentals, cotton, citrus fruit, pome fruit, nut crops, vegetables, potatoes, and other crops. Application rates are 5.6 to 28 g/ha for mite control, 11 to 22 g/ha for control of leaf miners. Also used for control of fire ants.

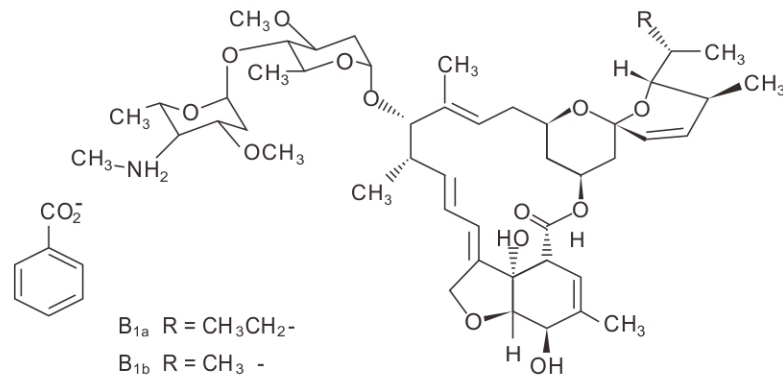
Specification for Abamectin 95% TC	
ITEMS	STANDARDS
Appearance	White to beige,crystallinepowder
Content of a.i.	≥95%
B1a/B1b	≥ 4.0
Loss on drying	≤2.0%
pH	4.5~7.0
Acetone insolubles	≤0.2%
Specification for Abamectin 1.8% EC	
ITEMS	STANDARDS
Appearance	Homogeneous light golden liquid
Content of a.i.	≥1.8%
Water	≤0.6%
pH	4.5~7.0
Emulsion stability (as 0.5% aqueous solution)	Qualified
Stability at 0°C	The volume of solid and/or liquid which separates shall not be more than 0.3 ml.

Packing: according to client's requirement.

Focus Product

Emamactin Benzoate

Structure formula:



Specification for Emamectin benzoate 70%TC	
ITEMS	STANDARDS
Appearance	White to beige powder
Content of a.i.	≥70%
B1a/B1b	≥ 20.0
Water	≤2.0%
pH	4.0~8.0
Acetone insolubles	≤0.5%
Specification for Emamectin benzoate 2% EC	
ITEMS	STANDARDS
Appearance	Homogeneous light yellow liquid
Content of a.i.	≥2.0%
B1a/B1b	≥ 20.0
Water	≤0.8%
pH	4.0~7.5
Emulsion stability (as 0.5% aqueous solution)	Qualified
Stability at 0°C	The volume of solid and/or liquid which separates shall not be more than 0.3 ml.
Specification for Emamectin benzoate 5%WDG	
ITEMS	STANDARDS
Appearance	White to light beige, flowable granules
Content of a.i.	≥5%
B1a/B1b	≥ 20.0
Wet sieve (through 75µm sieve)	≥98%
Suspensibility	≥80%
Disintegration time	≤180s

Application:

Non-systemic insecticide which penetrates leaf tissues by translaminar movement. Paralyzes the lepidoptera, which stop feeding within hours of ingestion, and die 2-4 days. Uses For control of Lepidoptera on vegetables, brassicas, cotton and in pine trees.

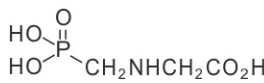
Packing:

according to client's requirement.

Focus Product

Glyphosate

Structure formula:



Application:

Control of annual and perennial grasses and broad-leaved weeds, pre-harvest, in cereals, peas, beans, oilseed rape, flax and mustard, at c. 1.5-2 kg/ha; control of annual and perennial grasses and broad-leaved weeds in stubble and post-planting/pre-emergence of many crops; as a directed spray in vines and olives, at up to 4.3 kg/ha; in orchards, pasture, forestry and industrial weed control, at up to 4.3 kg/ha. As an aquatic herbicide, at 0.2 kg/ha.

Specification for Glyphosate 95% TC	
ITEMS	STANDARDS
Appearance	White powder
Content of a.i.	≥95 %
Formaldehyde	≤0.8%
N-Nitrosoglyphosate	≤1.0%
Insolubles in 1M NaOH	≤0.2%
Specification for Glyphosate 480 g/L SL	
ITEMS	STANDARDS
Appearance	Homogeneous liquid
Content	≥480g/L
pH	4.0~8.5
Formaldehyde	≤ 1%
Solution stability (5% aqueous solution)	No color change;
	Sediment maximum: trace;
	Solid particles: pass through 45µm sieve.
Stability at 0°C	The volume of solid and/or liquid which separates shall not be more than 0.3 ml.

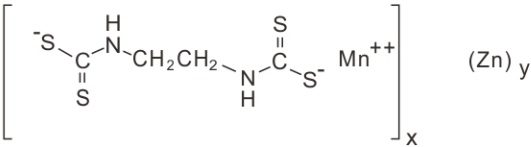
Packing: according to client's requirement.

Specification for Glyphosate 62% SL	
ITEMS	STANDARDS
Appearance	Homogeneous liquid
Content	≥62%
Formaldehyde	≤ 1%
pH	4.0~8.5
Solution stability (5% aqueous solution)	No color change;
	Sediment maximum: trace;
	Solid particles: pass through 45µm sieve
Stability at 0°C	The volume of solid and/or liquid which separates shall not be more than 0.3 ml
Specification for Glyphosate 75.7% SG	
ITEMS	STANDARDS
Appearance	Off-white granule
Content of Glyphosate ammonium	≥75.7%
Formaldehyde	≤ 0.5%
pH	3.0~8.0
Persistent foamability (1min)	≤40 mL

Focus Product

Mancozeb

Structure formula:



x:y = 1:0.091

Application:

Control of many fungal diseases in a wide range of field crops, fruit, nuts, vegetables, ornamentals, etc. More frequent uses include control of early and late blights (Phytophthora infestans and Alternaria solani) of potatoes and tomatoes; downy mildew (Plasmopara viticola) and black rot (Guignardia bidwellii) of vines; downy mildew (Pseudoperonospora cubensis) of cucurbits; scab (Venturia inaequalis) of apple; sigatoka (Mycosphaerella spp.) of banana and melanose (Diaporthe citri) of citrus. Typical application rates are 1500-2000 g/ha. Used for foliar application or as a seed treatment.

Specification for Mancozeb 90% TC	
ITEMS	STANDARDS
Appearance	Daffodil yellow to light yellow powder
Content of a.i.	≥90%
Water	≤1.5%
Manganese	≥20%
Zinc	≥2.0%
Specification for Mancozeb 80% WP	
ITEMS	STANDARDS
Appearance	Homogeneous loose powder
Content of a.i.	≥80%
Wetting time	≤60s
Wet sieve (through 44µm sieve)	≥96%
Suspensibility	≥60%
pH	6.0~9.0
Water	≤3.0%

Specification for Mancozeb 48%+Metalaxyl 10%WP	
ITEMS	STANDARDS
Appearance	Fine loose powder
Content of mancozeb	≥48%
Content of metalaxyl	≥10%
Suspensibility of mancozeb	≥60%
Suspensibility of metalaxyl	≥60%
Wet sieve (through 75µm sieve)	≥98%
pH	5~9
Wetting time	≤60s
Specification for Mancozeb 60%+Dimethomorph 9% WP	
ITEMS	STANDARDS
Appearance	Fine loose powder
Content of mancozeb	≥60%
Content of dimethomorph	≥9%
Suspensibility of mancozeb	≥60%
Suspensibility of dimethomorph	≥60%
pH	5~9
Wetting time	≤60s



Herbicide

Commodity	Tech Grade	Formulation
2,4D	98%TC	720G/L SL, 860G/L SL
Acetochlor	95%TC	50%EC, 900G/L EC
Atrazine	95%TC	80%WP
Clethodim	90%TC	120g/l EC, 240g/l EC
Dicamba	98%TC	480g/l SL
Fenoxaprop-p-ethyl	95%TC	10%EC, 75%SG
Glyphosate	95%TC	41%SL, 62%SL, 75%SG
Imazethapyr	98%TC	5%SL, 10%SL
Metolachlor	97%TC	720G/LSL, 960G/L SL
Metsulfuron-methyl	95%TC	10%WP, 60%WP, 60%WDG
Nicosulfuron	95%TC	40G/L OSC, 75%WDG
Oxyfluorfen	95%TC	240G/L EC
Propanil	97%TC	360G/L EC, 480G/L EC, 60%WDG



Insecticide

Commodity	Tech Grade	Formulation
Alpha-cypermethrin	95%TC	5%EC, 10%EC
Abamectin	95%TC	1.8%EC, 3.6%EC
Acetamiprid	97%TC	20%SP, 70%WP
Bifenthrin	97%TC	100g/l EC, 20%EC
Chlopyrifos	92%TC	5%EC, 10%EC
Cypermethrin	97%TC	40%EC, 480G/L EC
Diazinon	95%TC	50%EC, 600G/L EC
Emamectin Benzoate	70%TC	2%EC, 5%WDG
Imidacloprid	97%TC	200G/L SL, 35%SC, 70%WDG
Lambda-cyhalothrin	95%TC	2.5%EC, 5%EC, 10%EC
Malathion	95%TC	45%EC, 57%EC,70%EC
Fipronil	95%TC	20%SC

Plant Growth Regulator

Commodity	Tech Grade	Formulation
Ethephon	85%TC	480G/L SL
Gibberellic Acid (GA3)	90%TC	10%Tablet, 10%SP
Paclobutrazol	95%TC	25%SC,15%WP



Fungicide

Commodity	Tech Grade	Formulation
Azoxystrobin	98%TC	25% SC, 50% WDG
Carbendazim	98%TC	50%SC,50%WP,80%WP
Copper hydroxide	95%TC	77%WP
Chlorothalonil	92%TC	720G/L SC, 75%WP
Difenoconazole	95%TC	30G/L FS, 10%WDG, 250GL EC
Hymexazol	98%TC	70%WP
Mancozeb	90%TC	80%WP
Metalaxyl	90%TC	20%WP, 35%WP,50%WP
Tebuconazole	97%TC	6%FS, 25%EC, 25%EW, 80%WP
Thiram	95%TC	400g/l SC

Product Mixture

Acetochlor 15%+Prometryn25%EC
Propanil 275 g/l+Butachlor 275g/l EC
Imidacloprid 30g/l+Bifenthrin20g/l EC
Acetamiprid 10g/l+ lambda-cyhalothrin 10g/l EC
Lambda-cyhalothrin 15g/l+ Thiamethoxam 30g/l SC
Emamectin Benzaote 48g/l + Acetamiprid 64g/l EC
Cypermethrin 72g/l+Abamectin 20g/l EC
Lambda-cyhalothrin 30g/l+ Acetamiprid 16g/l EC